

MYANMAR YI JIN



缅甸亿金钢结构有限公司
MYANMAR YI JIN STEEL STRUCTURE CO., LTD



缅甸亿金钢结构有限公司
MYANMAR YI JIN DEVELOPMENT AND
CONSTRUCTION CO., LTD



缅甸亿金设计研究院有限公司
MYANMAR YI JIN DESIGN INSTITUTE CO., LTD

地址 / ADDRESS: Plot No.K3 and K4, Myay Taing Block (20), Corner of Than Lwin Street and Sabal Street, Anawara Industrial Zone, Hlaing Thar Yar Township, Yangon.

电话 / TELEPHONE: +951 3683423, +951 3683424, +951 3683471

邮箱 / EMAIL: info@myanmaryijin.com 网站 / WEBSITE: www.myanmaryijin.com



CONTENTS

目录

01	COMPANY PROFILE 公司简介	01
02	MAIN OPERATION 主营业务	03
03	DESIGN 设计	06
04	FABRICATION 制造	09
05	QUALITY CONTROL 质量控制	15
06	PROJECT PORTFOLIO 项目业绩	18

COMPANY PROFILE

公司简介

Myanmar Yijin is a China-Myanmar joint venture company, well established in 2016 and consist of Myanmar YiJin Developemnt and Construction Co., Ltd, Myanmar Yi Jin Steel Structure Co., Ltd, Myanmar Yi Jin DesignInstitute. We are a one stop service provider that execute the full chain process of a construction company. Itincludes project design, steel manufacturing, on site installation and civil works accordioning to the utmost quality and standards. We have proven expertise in delivering residential, industrial, commercial, and institutional developments. Our project portfolio includes high-rise buildings, warehouses, production facilities, and retail centres, constructed using both Reinforced Cement Concrete (RCC) and Pre-Engineered Building (PEB) systems.

"缅甸亿金"是由缅甸亿金开发建设有限公司、缅甸亿金钢结构有限公司、缅甸亿金设计研究院有限公司共同组成的中缅合资公司，公司于2016年成立。业务范围涵盖项目设计，优化，工程总承包、钢结构加工，安装等，交接过多种类质量保证的项目。现已交付过市政工程，多个工业厂房、仓库、办公楼、公寓楼，室内外装修、工程商业楼和民用住宅楼等，综合预制钢结构和混凝土工程两种体系进行施工建造。

VALUES 价值观

• Innovation 创新

We pushed for smart, practical solutions that improve technology, strength, efficiency, and durability.

我们致力于推动智能且实用的解决方案，以提升技术、强度、效率和耐久性。

• Built to Last 经久耐用

We deliver structures designed for strength, durability, and long service life.

我们交付的结构设计注重强度、耐久性及长久的使用寿命。

• Discipline in Execution 执行严明

We plan thoroughly, execute precisely, and control every stage of work.

我们周密计划、精准执行，并严格把控每个施工阶段。

• Ownership & Accountability 责任担当

We take full responsibility from fabrication to final installation.

我们对从制造到最终安装的全过程承担全部责任。

• Integrity in Action 诚信践行

We do what we commit to - on quality, safety, cost, and schedule.

我们恪守承诺，在质量、安全、成本和工期方面说到做到。

VISION 愿景使命

To shape the backbone of future infrastructure, where precision-engineered steel, installation, and integrated civil works come together to deliver structures that define skylines, support industries, and endure generations.

打造未来基础设施的集团，让精密设计的钢结构、和现场安装与土建工程综合打造定义城市天际线、支撑产业发展并经久耐用的建筑。

MISSION 愿景使命

To engineer and manufacture precision structural steel that drives strength, speed, and long-term durability.

研发与制造精密设计的结构钢，提供卓越强度、施工效率与持久耐用性。

To deliver disciplined steel installation and civil construction, executed with absolute safety, project control, and reliability.

提供严谨的钢结构安装及土建施工，以绝对安全、严格管控与可靠执行保障项目落地。

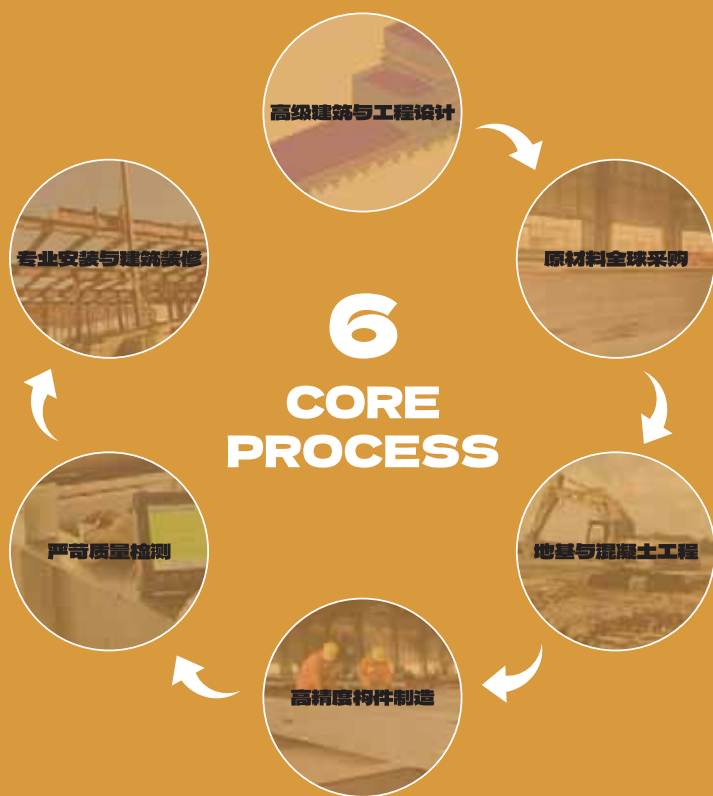


OUR INTEGRATED PROCESS

我们的核心工艺

We provide a complete, turnkey solution for modern industrial and commercial construction. Our 6 Core Process begins with Advanced Architectural Design, utilizing sophisticated modeling to integrate robust RCC (Reinforced Cement Concrete) sub-structures with high-precision steel super-structures.

我们为现代工业与商业建筑提供完整的一站式交钥匙解决方案。我们的六大核心工艺始于先进建筑设计，通过精密建模技术，将坚固的钢筋混凝土(RCC)下部结构与高精度钢结构上部结构有机融合。



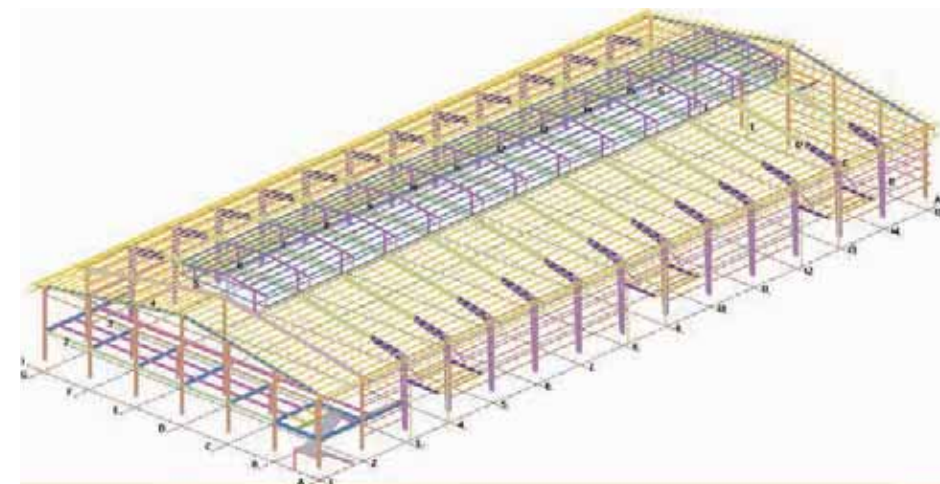
MAIN OPERATION

主要业务

DESIGN 设计

Delivering optimized structural and architectural plans that ensure compliance and reduce project risks.

提供优化的结构与建筑方案，确保合规性并降低项目风险。



MAIN OPERATION

主要业务

FABRICATION 制造

Producing steel structure members in-house for internal projects and supplying them to construction partners for their project requirements.
为内部项目自主生产钢结构构件,并向施工合作伙伴供应其项目所需构件。



MAIN OPERATION

主要业务

CONSTRUCTION 施工

We are a full-service construction partner providing integrated, one-stop solutions for Steel Structure (SS) and RCC buildings.
我们是一家全方位的建筑合作伙伴,为钢结构(SS)和钢筋混凝土(RCC)建筑提供集成化的一站式解决方案。



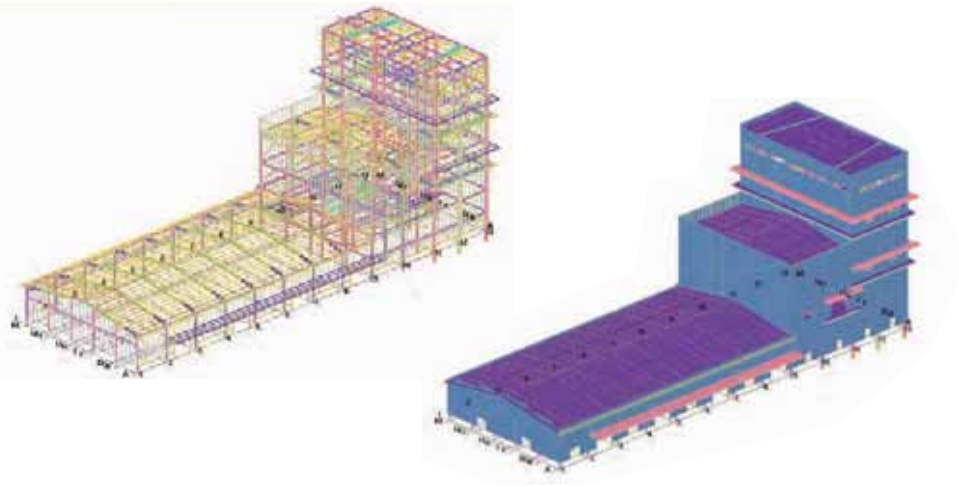
DESIGN

设计

DESIGN: THE FOUNDATION

设计:根基之始

- Design is critical, determining a structure's cost-effectiveness and durability
设计至关重要, 直接决定结构的经济性与耐久性。
- This crucial stage is led by our Chinese Expert Design Manager, guaranteeing every structure we build is both highly efficient and supremely strong.
这一关键阶段由我们的中国籍专家设计经理主导, 确保我们建造的每一座结构都兼具高效性与卓越强度。



DESIGN PROCESS

设计流程

From conceptual design to final shop drawings, our comprehensive two-phase system eliminates risk and ensures absolute compliance and structural integrity

从概念设计到最终施工图, 我们全面的两阶段系统消除了风险, 并确保了绝对的合规性和结构完整性。

1 Conceptual Design & System Selection

概念设计与系统选择

Initial Planning / 初始规划

Initial structure planning, layout optimization, and system choice to define the project foundation.
初始结构规划、布局优化和系统选择, 以确定项目基础。

2 Member Design & Member Detailing

构件设计与详图

Component Sizing / 构件定型

Sizing members based on loading conditions, material specifications, and required safety factors.
根据荷载条件、材料规格和所需的安全系数确定构件尺寸。

3 3D Modeling & Detailing

3D建模与详图

Visual Verification / 视觉验证

Precise 3D models for advanced clash detection, visual confirmation, and geometry verification.
精确的3D模型, 用于高级碰撞检测、视觉确认和几何验证。

4 Structural Analysis & Modeling

结构分析与建模

Engineering Validation / 工程验证

Engineering calculations and simulations using trusted design tools to validate structural integrity.
使用可靠的设计工具进行工程计算和模拟, 以验证结构完整性。

5 Cost Documents (BOQ, BOM)

成本文件 (BOQ, BOM)

Budget & Procurement / 预算与采购

Accurate BOQ and BOM for precise budgeting, procurement planning, and material control.
准确的工程量清单 (BOQ) 和材料清单 (BOM), 用于精确的预算编制和采购。

6 Shop Drawings & GA Drawings

施工详图与总布置图

Construction Blueprint / 施工蓝图

Final detailed drawings (Shop, Fabrication, GA) for seamless site execution and construction.
最终详图 (施工、制造、GA), 用于现场执行和无缝施工。

DESIGN COMPLIANCE

设计合规性

Compliance with Global Standards

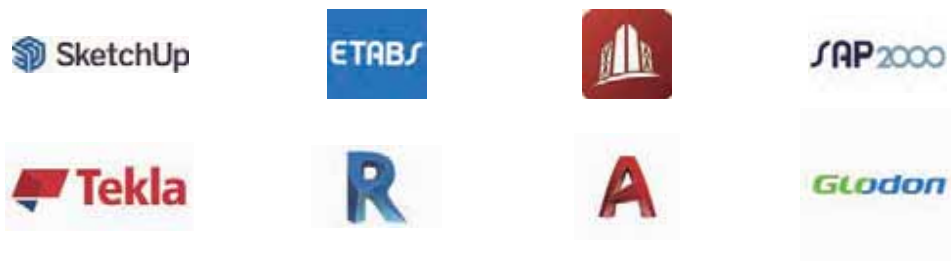
遵守全球标准

We ensure all our steel structure designs are compliant with the following critical regulatory and industry standards:
我们确保所有钢结构设计均符合以下关键法规与行业标准:

- AISC - American Institute of Steel Construction
AISC - 美国钢结构协会
- ACI318 - American concrete Institute
ACI318 - 美国混凝土协会
- Myanmar National Building Code (MNBC)
缅甸国家建筑规范(MNBC)
- VDC Building Laws
仰光市发展委员会建筑法

DESIGN SOFTWARE

设计软件



FABRICATION

制造

With precision as our priority, our in-house steel fabrication facility brings designs to life. We use CNC cutting machines, automated drilling, and welding systems to shape and prepare components with exacting accuracy. Every piece is fabricated to meet international quality standards, guaranteeing consistency, durability, and a seamless fit during on-site assembly.

以精准为先, 拥有内部钢结构制造设施, 将设计转化为现实。我们使用数控切割机、自动化钻孔和焊接系统, 以极高的精度塑造和准备组件。每一件部件均按照国际质量标准制造, 确保一致性、耐用性和现场组装的无缝衔接。

HOT-ROLLED PRODUCTION LINE

1000+ Tons
HOT-ROLLED STEEL MEMBERS
PRODUCED MONTHLY

热轧生产线

主次结构1000+吨/月

COLD-ROLLED PRODUCTION LINE

1500+Tons
COLD-ROLLED STEEL MEMBERS
PRODUCED MONTHLY

冷轧钢生产线

维护系统1500+吨/月



MACHINES

机器

Experience the cutting-edge technology and expert craftsmanship that drive Myanmar Yi Jin's steel structure fabrication. Our modern factory, equipped with advanced machinery, ensures that every steel component is produced with meticulous attention to detail and meets the highest standards of quality and durability.

体验驱动缅甸亿金钢结构制造的尖端技术与精湛工艺。我们的现代化工厂配备先进设备，确保每一件钢构件都经过精益求精的加工，严格符合最高品质与耐久性标准。



CUTTING MACHINE

切割设备

Our CNC flame and plasma cutting machines deliver precise, efficient, and high-quality metal plate cutting—ensuring accuracy, productivity, and reliable performance for industrial fabrication.

我们的数控火焰与等离子切割机，可实现精准、高效、高品质的金属板材切割，确保工业制造的精确性、生产效率以及稳定可靠的性能表现。

CNC FLAME CUTTING MACHINE

型数控多头火焰切割机



CNC PLASMA CUTTING MACHINE

数控等离子切割机



ASSEMBLY & WELDING MACHINES

装配与焊接机

H BEAM ASSEMBLY MACHINE H型钢组立机

Aligns and assembles the web and flange plates to form the H-section before full welding.

对准与组立: 在进行满焊前, 将腹板与翼缘板精确对中并组装成H型截面。

H-TYPE STEEL AUTOMATIC ARC-SUBMERGING WELDER H型钢自动埋弧焊机

Performs full welding on the assembled H-section to achieve a strong and uniform joint.

对已组装的H型钢进行全透焊接, 确保焊缝牢固、均匀。



STRAIGHTENING & BLASTING MACHINES

矫直与抛丸机

H-TYPE STEEL FLANGE STRAIGHTENING MACHINE H型钢翼缘矫直机

Eliminates flange deformation caused by heat during the welding process to restore beam alignment.

消除焊接过程中因受热引起的翼缘变形, 恢复钢梁的直线度与对中精度。

SHOT BLASTING MACHINE 通过式抛丸清理机

Cleans the surface of the welded and straightened H-beams by removing rust, scale, and welding residues.

对焊接并校正后的H型钢表面进行喷丸清理, 去除氧化皮、铁锈及焊接残留物。



ROOF & WALL CLADDING MACHINE 屋面与墙面围护板成型设备

C-PURLIN ROLL FORMING MACHINE C型檩条成型机

Manufactures C-shaped structural purlins that provide essential secondary support, efficiently transferring roofing and wall loads to the main steel framework.

生产C形结构檩条，作为次要承重构件，有效将屋面与墙体荷载传递至主体结构。



Z-PURLIN ROLL FORMING MACHINE Z型檩条成型机

Produces Z-shaped structural purlins engineered for overlapping at supports, enabling continuous-span roof and wall systems with superior load distribution and structural efficiency.

生产Z形结构檩条，专为支座处搭接设计，可构建连续跨度的屋面与墙体骨架系统，显著提升结构效率与承载性能。



ROOF FORMING MACHINE 屋面成型机

Produces durable, cost-effective Klip-lok® profile roofing sheets for a wide range of commercial, industrial, and residential construction applications.

生产耐用且经济的Klip-lok®型金属屋面面板，适用于各类商业、工业及住宅建筑项目。



FLOOR DECKING ROLL FORMING MACHINE 楼承板成型机

Produces high-strength steel floor decking from galvanized coil, serving as permanent formwork and contributing to the structural integrity of composite floor systems.

以镀锌钢卷为原料，生产高强度钢楼承板，兼具永久性模板功能，显著提升组合楼承板系统的整体结构性能。



QUALITY CONTROL

我们的质量控制流程

Our QC process ensures every stage of fabrication meets strict standards, from raw material to final coating.

我们的质量控制流程确保从原材料到最终涂层的每一个制造阶段都符合严格标准。

METAL PLATE INSPECTION 金属板材检验



FLANG CUTTING & DRILLING INSPECTION 法兰切割与钻孔检验



CUTTING, ASSEMBLY, SAW & STRAIGHTENING INSPECTION

切割、组装、锯切及矫直质量检验

DIMENSIONAL INSPECTION 尺寸检验



WELD PREPARATION AND ANGLE INSPECTION 焊接准备及坡口角度检验



VISUAL INSPECTION AND COMPONENT STRAIGHTNESS 外观检验及部件平直度检查



POST-WELD & COATING QUALITY CONTROL

焊后及涂层质量控制

NDT QUALITY INSPECTION NDT无损检测质量检验



BLASTING QUALITY INSPECTION 喷砂质量检验



PAINTING QUALITY INSPECTION 喷漆质量检验



NATIONAL KEY PROJECTS

国家重点工程



**OUR PROJECTS
ENGINEERING IN STEEL, BUILT IN MYANMAR**

**我们的项目
以钢材为基, 铸就缅甸之耀**

We are proud to be behind some of Myanmar's most iconic steel structure projects. From national landmarks like Zayar Thiri, Wunna Theikdi, and Mandalay Thiri Stadiums to key developments such as the Mandalay Jade Gem Market and Mandalay Convention Centre, our work reflects strength, scale, and a deep commitment to building for Myanmar's future.

我们自豪地参与了缅甸众多标志性钢结构工程的建设。从仰光的扎亚迪里体育场、万纳提基体育场和曼德勒 Mandalay Thiri 体育场等国家地标, 到曼德勒翡翠市场、曼德勒会议中心等关键基础设施项目, 我们的工作彰显了结构的力量与规模, 更体现了我们为缅甸未来发展倾注的坚定承诺。

2013 Southeast Asian Games Stadium

2013年东南亚运动会体育场



Steel Used: 4,780 tons
Total Area: 56,019 m²
Construction Area: 32,000 m²
Shape: Oval with a saddle-shaped curve
Dimensions: Long Axis: 263 m, Short Axis: 213 m
Total Height: 24.25 meters
Capacity: 30,000 people



用钢量: 4,780 吨
总面积: 56,019 平方米
施工面积: 32,000 平方米
造型: 椭圆形, 呈马鞍状曲线
尺寸: 长轴: 263 米, 短轴: 213 米
总高度: 24.25 米
容纳人数: 30,000 人

Mandalay Convention Centre

曼德勒会议中心(MCC)



Steel Used: 5,200 tons
Construction Area: 31,000 m²
Structure: Steel frame
Special Features: Large component thickness (up to 125mm), requiring first-class full penetration welding. The project also involved on-site installation with large-tonnage cranes.

用钢量: 5,200 吨
施工面积: 31,000 平方米
结构形式: 钢框架结构
特殊亮点: 构件厚度大(最大达125毫米), 需采用顶级全熔透焊接工艺; 项目现场安装涉及重型起重吊装作业。



PROJECTS ACROSS MYANMAR

缅甸全国项目分布



Delivered Projects | 已交付项目:100+
 Industrial & Logistics | 工业及物流类:80%
 Residential & Commercial | 住宅及商业类:15%
 Public & Sports | 公共及体育类:5%

Project Regions 项目区域

INDUSTRIAL & LOGISTICS PROJECTS

工业与物流项目

PAI

Steel Used: 119 tons

Location: Yangon, Myanmar

Project Description: Steel Structure Warehouse

Completed Date: Jan 2026

钢材用量: 119 吨

项目地点: 缅甸仰光

项目描述: 钢结构仓库

竣工日期: 2026 年 1 月



MANDALAY BEVERAGES ENTERPRISE LIMITED

Steel Used: 2,278 tons

Location: Mandalay, Myanmar

Project Description: Steel Structure Fabrication

Completed Date: Jun 2024

钢材用量: 2,278 吨

项目地点: 缅甸曼德勒

项目描述: 钢结构设计与制造

竣工日期: 2024年6月



ADONIA FOOTWEAR CO., LTD

Steel Used: 4,700 tons

Location: Bago, Myanmar

Project Description: Total area: ~120,000 sqm (Phase I: ~85,000 sqm, 3-story steel frame plant, Phase II: ~35,000 sqm)

Completed Date: Jan 2024

钢材用量: 4,700 吨

项目地点: 缅甸勃固

项目描述: 总建筑面积约 120,000 平方米 (一期: 约 85,000 平方米, 3 层钢结构厂房; 二期: 约 35,000 平方米)

竣工日期: 2024 年 1 月



Steel Used: 394 tons
Location: Thilawa, Yangon, Myanmar
Project Description: Fuel & Gas Infrastructure, Industrial Buildings, Support & Safety Buildings
Completed Date: Sep 2023

钢材用量: 394 吨
项目地点: 缅甸仰光迪拉瓦
项目描述: 涵盖燃油与燃气基础设施、工业厂房、配套及安全建筑
竣工日期: 2023年9月



MYANMAR EVER GREEN SUGAR CO., LTD

Steel Used: 821 tons
Location: Sagaing, Myanmar
Project: Sugarcane field steel structure building, Cleaning Section's Supplementary Steel Structure Work, Thermal Power Station Steel Structure Building, Boiler Room
Completed Date: Jun 2022

钢材用量: 821 吨
项目地点: 缅甸实皆
项目内容: 甘蔗田钢结构建筑、清洗工段补充钢结构工程、热电站钢结构建筑及锅炉房
竣工日期: 2022年6月



BEST ETERNITY RECYCLE PULP AND PAPER CO., LTD

Steel Used: 1,096 tons
Location: Naypyidaw, Myanmar
Project Description:
Scale: 257,000 m² total site area (two phases)
Phase I: 70,000 m²-wet pulpproduction line, washing line, sewage-treatment station, substation, and storage yard
Completion Date: Jun 2022

钢材用量: 821 吨
项目地点: 缅甸实皆
项目内容: 甘蔗田钢结构建筑、清洗工段补充钢结构工程、热电站钢结构建筑及锅炉房
竣工日期: 2022年6月



HAILI THAR FACTORY

Steel Used: 1807 tons
Location: Yangon, Myanmar
Project Description:
Phase I: 34,000 m² - offices, workshops, warehouses, dormitories, and power facilities
Phase II: 9,000 m² - additional building expansion
Completed Date: Feb 2022

用钢量: 1,807吨
项目地点: 缅甸仰光
项目概况:
一期工程: 34,000平方米, 建设办公楼、车间、仓库、宿舍及电力设施
二期工程: 9,000平方米, 进行建筑扩建
竣工日期: 2022年2月



SHYANG PENG CHENG

Steel Used: 2,625 tons
Location: Bago, Myanmar
Project Description: Large-scale shoe processing plant with a total planned area of 223,000 m².
Phase I: 72,000 m² land area | 40,000 m² building area
Phase II: 45,000 m² land area | 20,000 m² building area
Completed Date: Jan 2022

用钢量: 2,625吨
项目地点: 缅甸勃固省
项目概况: 大型鞋类加工厂, 总体规划面积223,000平方米
一期工程: 占地72,000平方米 | 建筑面积40,000平方米
二期工程: 占地45,000平方米 | 建筑面积20,000平方米
竣工日期: 2022年1月



ROYAL D

Steel used: 321 tons
Location: Mandalay, Myanmar
Project: Steel Structure Warehouse The project's roof is arc-shaped and uses a steel pipe truss structure.
Difficulties of the project: small parts, many members, and extensive field welding.
Completed Date: Jan 2021

用钢量: 321吨
项目地点: 缅甸曼德勒
项目概况: 钢结构仓库
项目特点: 屋顶为弧形设计, 采用钢管桁架结构。项目难点在于构件细小、杆件数量多、现场焊接工作量大。
竣工日期: 2021年1月



HON CHUAN

Steel used: 563 tons
Location: Yangon, Myanmar
Project Description: Steel Structure Warehouse with complete structural, MEP, and fire protection works
Completed Date: Jan 2021

用钢量: 563吨
项目地点: 缅甸仰光
项目概况: 钢结构仓库, 包含完整的结构、机电管道(MEP)及消防工程
竣工日期: 2021年1月



NEW HOPE MANDALAY

Steel Used: 735 tons
Location: Mandalay, Myanmar
Project Description: 6-storey mainworkshop (40.5 m high) withware-houses, office, and dormitory
Completed Date: Dec 2021

钢材用量:735吨
项目地点:缅甸勃固
项目描述:6层主车间(高40.5米), 配套仓库、办公楼及宿舍楼
竣工日期:2021年12月



CORN FLAKE FEED FACTORY

Steel Used: 634 tons
Location: Lashio, Myanmar
Project Description: 38,467 m² | 32-m high warehouse,tablett pressing workshop, silos, and supporting facilities
Completed Date: Jun 2021

用钢量: 634吨
项目地点: 缅甸腊戍
项目概况: 总建筑面积38,467平方米, 包含32米高的仓库、压片车间、筒仓及配套设施
竣工日期: 2021年6月



COMMERCIAL & RESIDENTIAL PROJECTS 商业与住宅项目

GREAT FOUNDATION INDUSTRIES

Location: Yangon, Myanmar
Project Description: 5-storey RC building (Structural works, facade, MEP & fire safety, finishing, access road paving)
Completed Date: March 2025

项目地点: 缅甸仰光
项目描述: 5层钢筋混凝土建筑 (包括结构工程、外立面、机电与消防系统、装饰装修及进场道路铺装)
竣工日期: 2025年3月



MYANMAR PANDA MANUFACTURING

Location: Yangon, Myanmar
Project Description: 4-storey RC building
Completed Date: Sep 2021

项目地点: 缅甸仰光
项目概况: 4层钢筋混凝土建筑
竣工日期: 2021年9月



GOLDEN LEGEND GROUP

Steel Used: 735 tons
Location: Yangon, Myanmar
Project Description: 2-storey steelstructure building (Hot PotRestaurant)
Completed Date: Dec 2021

钢材用量:735吨
项目地点:缅甸仰光
项目描述:6层主车间(高40.5米), 配套仓库、办公楼及宿舍楼
竣工日期:2021年12月



FORTUNE COMMERCIAL CITY

Steel Used: 280 tons
Location: Yangon, Myanmar
Project Description: 3 Storey SteelStructure Building
Completed Date: July 2020

用钢量:280吨
地点:缅甸曼德勒
项目描述:三层钢结构建筑
竣工日期:2020年7月



PUBLIC & SPORTS FACILITIES PROJECTS 公共与体育设施项目

JADE MARKET

Steel Used: 360 tons
Location: Yangon, Myanmar
Project Description:
Phase I (11,661 m²): Established six buildings formarket sales, jade processing, offices, dining,and staff housing.
Phase II: Completed the facility withinterior/exterior finishing, full utilities (HVAC,water, power), fire safety, and municipal works.
Completed Date: Sep 2022

用钢量:360吨
项目地点:缅甸仰光
项目概况:
一期工程(11,661平方米):建成六栋建筑, 用于市场销售、玉石加工、办公、餐饮及员工住宿。
二期工程:完成室内外精装修, 配套齐全的公用设施(暖通空调、给排水、电力)、消防系统及市政工程。
竣工日期:2022年9月



PANNABHUMI BUDDHIST UNIVERSITY

Location: Yangon, Myanmar

Project Description:

- Steel Structure Roof Framing(Convocation Hall and Entry Pavilion)
- Canopy Link Way

Completed Date: May 2021

项目地点:缅甸仰光

项目概况:钢结构屋架(大会堂及入口馆)、连廊雨棚

竣工日期:2021年5月



PARAMI VALLEY RESIDENCE

Location: Yangon, Myanmar

Project Description: Steel Structural Framing for Glass Roof & Wall Cladding

Completed Date: June 2023

项目地点:缅甸仰光

项目概况:玻璃屋顶及墙面覆层钢结构框架

竣工日期:2023年6月



DESIGN MANDALAY

Steel Used: 58.18 tons

Metal Sheet: 3074.89 m²

Location: Hpa-An, Myanmar

Project Description: Steel Structure Roofing (Indoor Stadium)

Completed Date: Nov 2025

钢材用量:58.18吨

金属屋面板面积:3,074.89平方米

项目地点:缅甸帕安(Hpa-An, Myanmar)

项目描述:钢结构屋面(室内体育馆)

竣工日期:2025年11月



ART WAVE

Steel Used: 29 tons

Location: Mandalay, Myanmar

Project Description: Steel Structure Roofing (Indoor Stadium)

Completed Date: Sep 2023

用钢量:280吨

地点:缅甸曼德勒

项目描述:三层钢结构建筑

竣工日期:2020年7月



PROJECT PORTFOLIO

项目组合

No 编号	Client Name 客户名称	Building Type 建筑类型	Location (City) 所在地	Building Scale 建筑规模	Completed Date 完成日期
1	PAI	Steel Structure Warehouse 钢结构仓库	Yangon	K2,436,416,624	2026年1月
2	Design Mandalay Co., Ltd	Steel Structure Roofing 钢结构屋面	Hpa-An	K610,000,000	2025年11月
3	Great Foundation Industries Co., Ltd	Five Storey RC Building 五层钢筋混凝土建筑	Yangon	K2,696,330,272	2025年3月
4	Adonia Footwear Co., Ltd	Steel Structure Warehouse 钢结构仓库	Bago	\$18,922,563	2024年1月
5	MINGDA (Myanmar) Ltd	Decoration & Renovation Work 装饰与装修工程	Yangon	K76,969,000	2024年1月
6	Gree Indo Myanmar Co., Ltd	Steel Structure Warehouse 钢结构仓库	Patheingyi	\$530,000	2024年7月
7	DPCM Corporation Co., Ltd	Steel Structure Canopy 钢结构雨棚	Yangon	K29,395,157	2024年12月
8	GUANGHE INDUSTRY MYANMAR Co., Ltd	Steel Structure Warehouse 钢结构仓库	Yangon	K135,500,000	2023年1月
9	Mr. He changwen (Dongxingfu)	Steel Structure Warehouse 钢结构仓库	Bago	\$1,046,400	2023年1月
10	DPCM Corporation Co., Ltd	Car Parking Canopy + Steel Ladder 汽车停车棚 + 钢梯	Mandalay	K17,101,000	2023年5月
11	Yangon Ya Cheng Footwear Co., Ltd	Steel Structure Warehouse 钢结构仓库	Yangon	\$56,942	2023年5月
12	DPCM Corporation Co., Ltd	Swimming Pool Glass Roof & Decoration Steel Structure Frame 游泳池玻璃屋顶及装饰钢结构框架	Yangon	K109,878,553	2023年6月
13	SP2 Co., Ltd	Steel Structure Warehouse 钢结构仓库	Yangon	\$3,870,811	2023年7月
14	Art Wave Co., Ltd	Steel Structure Roofing 钢结构屋面	Mandalay	K288,640,000	2023年8月
15	King Lead Industrial Co., Ltd	Renovation Work for Roofing & Gutter 屋顶及排水沟翻新工程	Yangon	K103,148,320	2023年8月
16	China Petroleum Pipeline Engineering Co., Ltd (Myanmar Branch)	Steel structure Tank Farm 钢结构储罐区	Yangon	\$1,750,000	2023年9月
17	Tain Sin Kyal Co., Ltd (Warehouse-2)	Steel Structure Warehouse 钢结构仓库	Mandalay	K103,000	2023年12月
18	Shyang Peng Chen Co., Ltd	Steel Structure Warehouse + RC Buildings 钢结构仓库 + 钢筋混凝土建筑	Bago	\$16,400,221	2022年1月
19	Top Galaxy Co., Ltd	Steel Structure Warehouse 钢结构仓库	Bago	\$212,433	2022年1月
20	Hydrodynamic Myanmar Co., Ltd	Steel Structure Warehouse 钢结构仓库	Yangon	\$6,913,906	2022年2月
21	Myanmar Secure Group Co., Ltd	Steel Structure Building 钢结构建筑	NayPyiDaw	\$207,000	2022年5月
22	U Tin Shwe	Steel Structure Warehouse 钢结构仓库	Mandalay	\$445,166	2022年5月
23	Myanmar Ever Green Sugar Co., Ltd	Steel Structure Warehouse 钢结构仓库	Sagaing	K3,220,000,000	2022年6月
24	Myanmar Ever Green Sugar Co., Ltd	Steel Structure Warehouse 钢结构仓库	Sagaing	K510,000,000	2022年6月
25	Marketch International Corporation	Steel Structure Warehouse 钢结构仓库	Yangon	\$2,159,297	2022年6月

No 编号	Client Name 客户名称	Building Type 建筑类型	Location (City) 所在地	Building Scale 建筑规模	Completed Date 完成日期
26	Eden Group of Company	Steel Structure Building 钢结构建筑	Mandalay	\$406,199	2022年6月
27	Paragon Printing Manufacturing Co., Ltd	Steel Structure Warehouse 钢结构仓库	Yangon	K393,500,000	2022年9月
28	Eastern Property International Co., Ltd (Jade Market -1 Project)	Steel Structure Buildings 钢结构建筑	Mandalay	\$1,975,896	2022年9月
29	Eastern Property International Co., Ltd (Jade Market - Phase 2)	Steel Structure Buildings 钢结构建筑	Mandalay	¥2,896,081	2022年9月
30	China Petroleum Pipeline Engineering Co., Ltd (Myanmar Branch)	Steel Structure Tank Farm 钢结构储罐区	Yangon	\$473,785	2022年10月
31	Phoe La Min Co., Ltd	Steel Structure Warehouse 钢结构仓库	Myeik	K400,000,000	2022年12月
32	Tain Sin Kyal Co., Ltd (Warehouse-1)	Steel Structure Warehouse 钢结构仓库	Mandalay	K151,476,504	2022年12月
33	Top Galaxy Co., Ltd	Steel Structure Warehouse 钢结构仓库	Bago	\$914,997	2021年1月
34	Hon Chuan (Myanmar) Co., Ltd	Steel Structure Warehouse 钢结构仓库	Yangon	\$2,813,000	2021年1月
35	Myanmar Oasis Manufacturing Co., Ltd	Steel Structure Warehouse 钢结构仓库	Mandalay	\$1,210,165	2021年1月
36	Myanmar Pou Chen Co., Ltd	RC Building 钢筋混凝土建筑	Yangon	\$171,622	2021年3月
37	Myanmar Hongjia International Investment Co., Ltd	Steel Structure Buildings 钢结构建筑	Mandalay	\$4,153,380	2021年4月
38	CTC Tea Factory	Steel Structure Warehouse 钢结构仓库	Aung Pan	K381,299,097	2021年5月
39	Eden Group of Company Pannabumi Buddhist University	Steel Structure Building 钢结构建筑	Yangon	\$261,284	2021年5月
40	Hua Jia Co., Ltd	Steel Structure Warehouse 钢结构仓库	Yangon	\$1,964,000	2021年5月
41	Asia Oracle Co., Ltd	Steel Structure Warehouse 钢结构仓库	Lashio	\$1,218,963	2021年6月
42	Jing Long Factory	Steel Structure Warehouse 钢结构仓库	Mandalay	\$420,659	2021年7月
43	MM Interplast Co., Ltd	Steel Structure Warehouse 钢结构仓库	Yangon	\$490,000	2021年8月
44	Myanmar Panda Manufacturing Co., Ltd	Four Storey RC Building 四层钢筋混凝土建筑	Yangon	K2,115,459,609	2021年9月
45	Eden Group of Company	Steel Structure Building 钢结构建筑	Mandalay	\$138,301	2021年12月
46	New Hope Mandalay Co., Ltd	Steel Structure Warehouse 钢结构仓库	Mandalay	6,189,621,753 K\$	2021年12月
47	Satori Myanmar Construction Co., Ltd	Steel Structure Warehouse 钢结构仓库	Yangon	\$1,992,273	2020年4月
48	Myanmar Uniview Optical International Co., Ltd	Steel Structure Warehouse 钢结构仓库	Yangon	\$1,557,162	2020年7月
49	First Golden Dragon Construction Co., Ltd	Steel Structure Building 钢结构建筑	Yangon	¥4,288,325	2020年7月
50	Aung Kan Bo Motorcycle Industrial Co., Ltd	Steel Structure Canopy + Overhead Crane 钢结构雨棚 + 桥式起重机	Mandalay	\$32,275	2020年10月

PROJECT PORTFOLIO

项目组合

No 编号	Client Name 客户名称	Building Type 建筑类型	Location (City) 所在地	Building Scale 建筑规模	Completed Date 完成日期
51	Satori Myanmar Construction Co., Ltd	Steel Structure Warehouse 钢结构仓库	Mandalay	\$2,100,353	2020年12月
52	Three Swallows Construction Co., Ltd	Steel Structure Warehouse 钢结构仓库	Yangon	\$141,982	2019年1月
53	Golden Enviromental Construction Co.,Ltd	Steel Structure Building 钢结构建筑	Yangon	\$37,537	2019年1月
54	Jing Long Myanmar Trading Co., Ltd	Steel Structure Warehouse 钢结构仓库	Mandalay	\$3,229,021	2019年3月
55	Phee Central Ltd	Steel Structure Warehouse 钢结构仓库	Yangon	\$150,000	2019年3月
56	U Maung Maung	Steel Structure Warehouse 钢结构仓库	Yangon	\$395,374	2019年4月
57	Aung Kan Bo Motorcycle Industrial Co., Ltd	Steel Structure Warehouse 钢结构仓库	Mandalay	\$2,062,500	2019年5月
58	YA SHENG Shoe Factory	Steel Structure Building 钢结构建筑	Yangon	K79,199,500	2019年7月
59	Eden Group of Company	Steel Structure Canopy 钢结构雨棚	Yangon	\$11,631	2019年8月
60	Myanmar Panda Manufacturing Co.,Ltd (Dye House)	Steel Structure Warehouse 钢结构仓库	Yangon	K538,490,000	2019年9月
61	MEC Showroom	Three Storey Steel Structure Building 三层钢结构建筑	Yangon	K284,957,823	2019年9月
62	Golden Legend Group	Two Storey Steel Structure Building 两层钢结构建筑	Yangon	\$262,323	2019年10月
63	Best Eternity Recycle Pulp and Paper Co., Ltd	Steel Structure Warehouse 钢结构仓库	NayPyiDaw	\$5,112,489	2019年12月
64	Myanmar Knitting Factory Co., Ltd	Steel Structure Warehouse 钢结构仓库	Patheingyi	\$5,072,598	2019年12月
65	Europe & Asia Commercial Co., Ltd	Steel Structure Warehouse 钢结构仓库	Mandalay	K3,593,969,840+ \$697545.52	2018年3月
66	U Maung Sai (6 Mile Project)	One Storey Steel Structure Building 单层钢结构建筑	Yangon	\$46,600	2018年7月
67	U Kyaw Kyaw Oo	Steel Structure Warehouse 钢结构仓库	Mandalay	\$47,361	2018年8月
68	Yongnam Myanmar Co., Ltd	Steel Structure Building 钢结构建筑	Yangon	\$390,384	2018年9月
69	Crown Advanced Construction Co., Ltd	Glass Lift Steel Structure Installation 玻璃电梯钢结构安装	Yangon	\$31,900	2018年9月
70	Tooth Paste Factory	Steel Structure Warehouse 钢结构仓库	Yangon	K370,468,000	2018年12月
71	Prosperity Knitwear Co., Ltd	RC Tanks 钢筋混凝土储罐	Yangon	\$157,036	2018年12月
72	MM Interplast Co., Ltd	Steel Structure Warehouse 钢结构仓库	Yangon	\$1,014,631	2017年12月

COMPANY PHILOSOPHY
企业理念

BEHAVE WITH DEVOTION
做人用于情

WORK WITH HEART
做事用于心