

MYANMAR YI JIN



MYANMAR YI JIN STEEL STRUCTURE CO., LTD.

Head Office

Plot K3-K4, Corner of Thanlwin Road & Sabel Road, Ahnawrhatar Industrial Zone, Hlaing Thar Yar Township, Yangon.

Temporary Office

No.(47), Bo Nyar Na Street, Ward 5, Mayangone Township, Yangon.

Tel: +95 1 665934, +95 9 2011980, +95 9 259595800

Email: myanmaryijinsteelstructure@gmail.com

www.myanmarinyinsteelstructure.com



CONTENTS

目录

1. 公司简介	01
INTRODUCTION	
2. 营业执照	05
BUSINESS LICENSE	
3. 资质证书	06
CERTIFICATE OF QUALIFICATIONS	
4. 主营业务	07
MAIN OPERATION	
5. 组织架构	10
COMPANY ORGANIZATION CHART	
6. 主要设备	13
MAJOR FACILITY AND EQUIPMENT	
7. 业绩展示	17
PORTFOLIO	



缅甸亿金开发建设有限公司
Myanmar Yi Jin Development and Construction Co., Ltd



缅甸亿金钢结构有限公司
Myanmar Yi Jin Steel Stucture Co., Ltd



缅甸亿金设计研究院有限公司
Myanmar Yijin Design Institute Co., Ltd

COMPANY PROFILE

公司简介

“缅甸亿金”是由缅甸亿金开发建设有限公司、缅甸亿金钢结构有限公司、缅甸亿金设计研究院有限公司共同组成的中缅合资公司，公司于 2016 年成立，现已交付多个厂房、仓库、办公楼、公寓楼等项目，业务范围涵盖工程总承包、钢结构加工、市政工程、室内外装修工程等，建筑类型有工业厂房、商业楼和民用住宅楼等。

“缅甸亿金”相继承建并如期交付了内比都的 1#、2# 两个缅甸国家体育场和 3# 曼德勒国家体育场，曼德勒翡翠宝石市场，曼德勒会议中心和商业综合体、缅甸曼德勒的铂尔曼五星级酒店等缅甸国家级大型重点项目。

缅甸亿金开发建设有限公司是一家具备工程总承包资质和能力的企业，其主要业务范围是按照合同约定对建设工程项目的设计、采购、施工、试运行等实行全过程的承包。

缅甸亿金钢结构有限公司位于缅甸仰光的 Hlaing Thar Yar 镇，占地 15 英亩 (60000 平方米)，已建成生产车间、配套办公楼、宿舍楼等硬件设施，年产量约 50000 吨钢结构的自动化生产线，具有东南亚地区领先的制造工艺水平。

公司简介 COMPANY PROFILE

缅甸亿金设计研究院有限公司集建筑设计、结构设计、深化设计与工程造价为一体的集成服务，公司人员配备齐全，具有中国籍与缅甸籍的富有经验的设计师，熟悉中国及缅甸相关设计规范。专业设计人员的综合能力较强，能熟练利用结构有限元设计软件，如 PKPM, ETABS, ANSYS 等国际通用软件，同时具备手算能力。设计水平较高，能完成工业及民用建筑领域的各类建筑，如轻钢厂房、重钢厂房、多层厂房、低层 & 多层或小高层住宅或办公楼等。设计院依托缅甸亿金钢结构及缅甸亿金建设开发有限公司的业务平台，服务全缅甸的建筑市场。

“缅甸亿金”始终坚持精品出自雕琢，成功始于执着的企业文化。强大的品牌形象源自对工程质量精益求精的努力和对科学管理孜孜不倦的追求。

COMPANY PROFILE

公司简介

"Myanmar Yi Jin" is a China-Myanmar joint venture company formed by 1) Myanmar Yi Jin Development and Construction Co., Ltd., 2) Myanmar Yi Jin Steel Structure Co., Ltd., and 3) Myanmar Yi Jin Design Institute Co., Ltd. The company was established in 2016 and has now delivered several major projects such as factories, warehouses, offices, apartments and other buildings. The business scope covers the design and construction of general engineering contracting, steel structure fabrication, municipal industrial plants, residential buildings, building structures and interior decoration.

"Myanmar Yi Jin" was proud to have successfully completed the construction of three Myanmar National Stadiums in collaboration with Max Myanmar- Zayarthiri Stadium (Naypridaw), Wunna Theikdi Stadium (Naypridaw) and Mandalarthiri Stadium (Mandalay). Other major projects includes Mandalay Jade Gem Market, Mandalay Convention Center and Commercial Complex, Pullman five-star hotel (Mandalay) and other large-scale national key projects in Myanmar.

1) Myanmar Yi Jin Development and Construction Co., Ltd. is an enterprise with outstanding general contracting qualification. Its main business scope is to contract the whole process of engineering construction, project design, procurement, construction and trial operation according to the contract.

2) Myanmar Yi Jin Steel Structure Co., Ltd. is located in Hlaing thar Yar Township, Yangon, Myanmar. It covers an area of 15 acres (60000 square meters). Using its own steel structures, it has built factory warehouse, office buildings, dormitory buildings and other hardware facilities within its own compound. The annual output of steel structure is about 50000 tons. Its manufacturing technology is one of the leading in Southeast Asia.

3) Myanmar Yi Jin Design and Research Institute Co., Ltd. integrates architectural design, structural design, in-depth design and engineering cost as one of the integrated services. The company is fully equipped with experienced Chinese and Myanmar designers, and is familiar with relevant design codes of China and Myanmar. Professional designers have strong comprehensive ability and can skillfully use structural finite element design software, such as PKPM, ETABS, ANSYS and other international common software, and have the ability of manual calculation. It can complete all kinds of buildings in the field of industrial and civil buildings, such as light steel plant, heavy steel plant, multi room workshop, low-rise & multi-storied, small high-rise residential buildings or office buildings. Relying on the business platform of Myanmar Yi Jin Steel structure and Myanmar Yi Jin Construction and Development Co., Ltd., the design institute serves the construction market in Myanmar.

"Myanmar Yi Jin" upholds our philosophy that our superlative quality products and service comes from our scrupulous attention to detail and relentless quest for perfection. Our strong and excellent brand image is the result of our continuous commitment to improve the latest engineering innovation and our tireless pursuit of technological science.

BUSINESS LICENSE

营业执照



CERTIFICATE OF QUALIFICATION

资质证书

မြန်မာနိုင်ငံ ဆောက်လုပ်ရေးဆိုင်ရာ လုပ်ငန်းရှင်များအသင်းချုပ်
Federation of Myanmar Construction Entrepreneurs' Association
No.3, Corner of Waizayantar Road & Thanthumar Road, Thuwunna Junction,
Thingangyun Township, Yangon, Myanmar

Established In 1998

MCEA
MYANMAR CONSTRUCTION
ENTREPRENEURS' ASSOCIATION

အသင်းဝင်လက်မှတ်
Certificate Of Membership

Membership No. & Date
(2791, 14-7-2018) **Corporate Member**

အောက်ဖော်ပြပါ ကုမ္ပဏီ (သို့) နိုင်ငံခြား/အင်တာပရိုက်(စ်)/သမဝါယမ/တစ်သီးပုဂ္ဂလသည် ဤ မြန်မာနိုင်ငံ
ဆောက်လုပ်ရေးဆိုင်ရာ လုပ်ငန်းရှင်များအသင်းချုပ်တွင် (၁၄-၇-၂၀၁၈) ရက်နေ့မှစ၍
အသင်းဝင်တစ်ဦး ဖြစ်ပါကြောင်း။

The under- mentioned Limited Company [Myanmar (or) Foreign] / Enterprise /
Cooperative Society/ Individual is a member of the MCEA with effect from
(14-7-2018)

အသင်းဝင်အမည်နှင့် ကုမ္ပဏီအမည်
လိပ်စာ

ဆက်သွယ်ရန်ဖုန်း

Member's Name & Company's Name
Address

Contact Phone

Expire Date

140721

Mr. Liu Shouguang, Myanmar Yi Jin Steel Structure Co., Ltd
K3-K4, Corner of Thanlwin Road & Sable Road,
Anawrahtar Industrial Zone, Hlaing Thar Yar, Yangon Division.

09-2011980

President

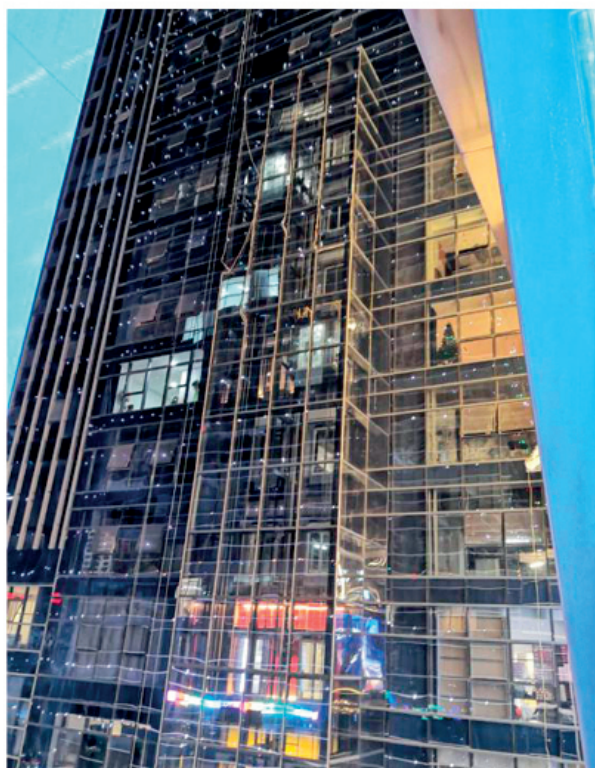
缅甸建筑协会会员

MAIN OPERATION

主营业务

一、承接建筑工程，建筑装饰工程，钢结构工程

1. Undertake construction project, decoration project, steel structure project



MAIN OPERATION

主营业务

二、承接生产、加工以及销售各类钢结构产品

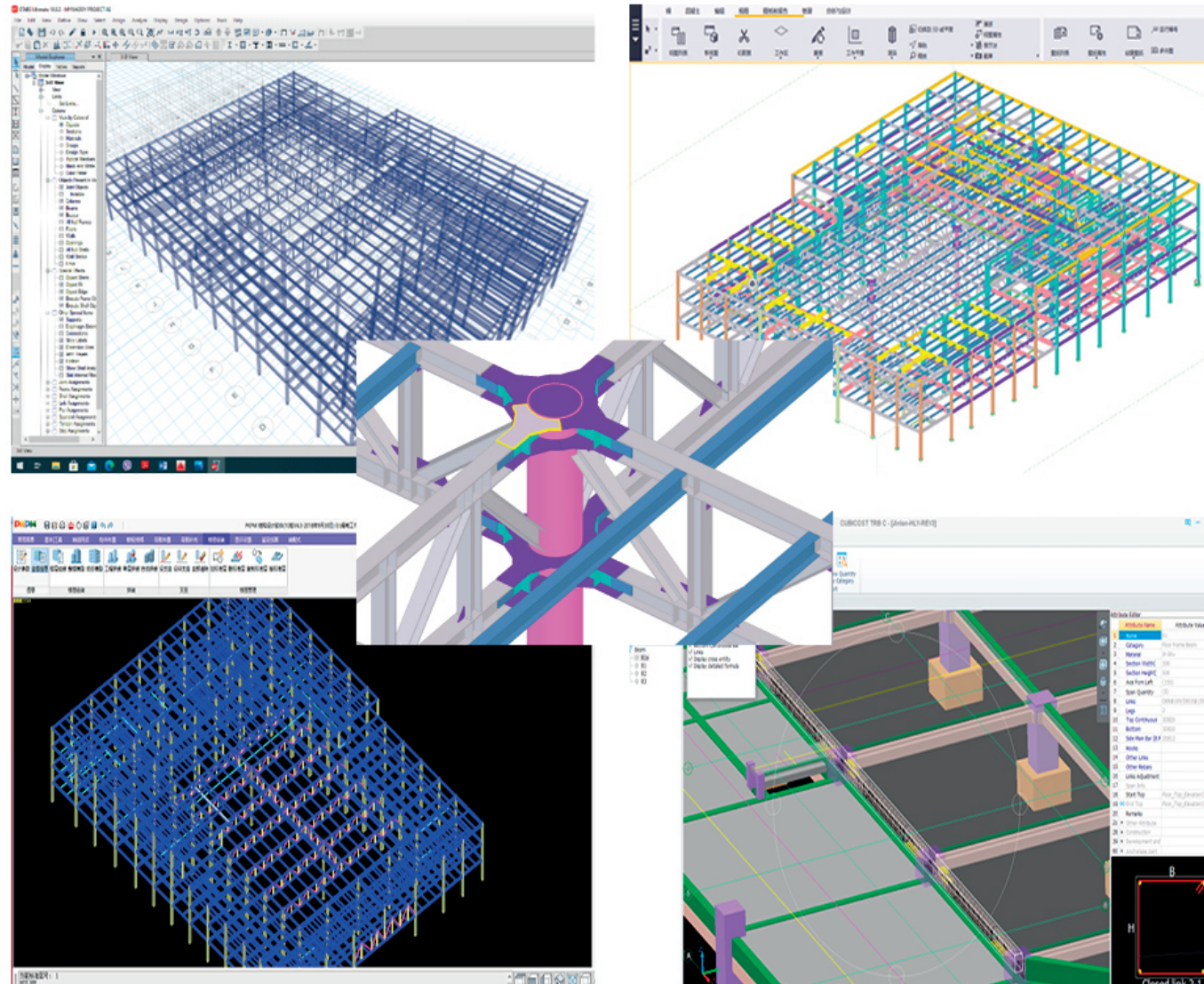
2. Undertake fabrication, steel structure processing and sales of various steel structure products



MAIN OPERATION

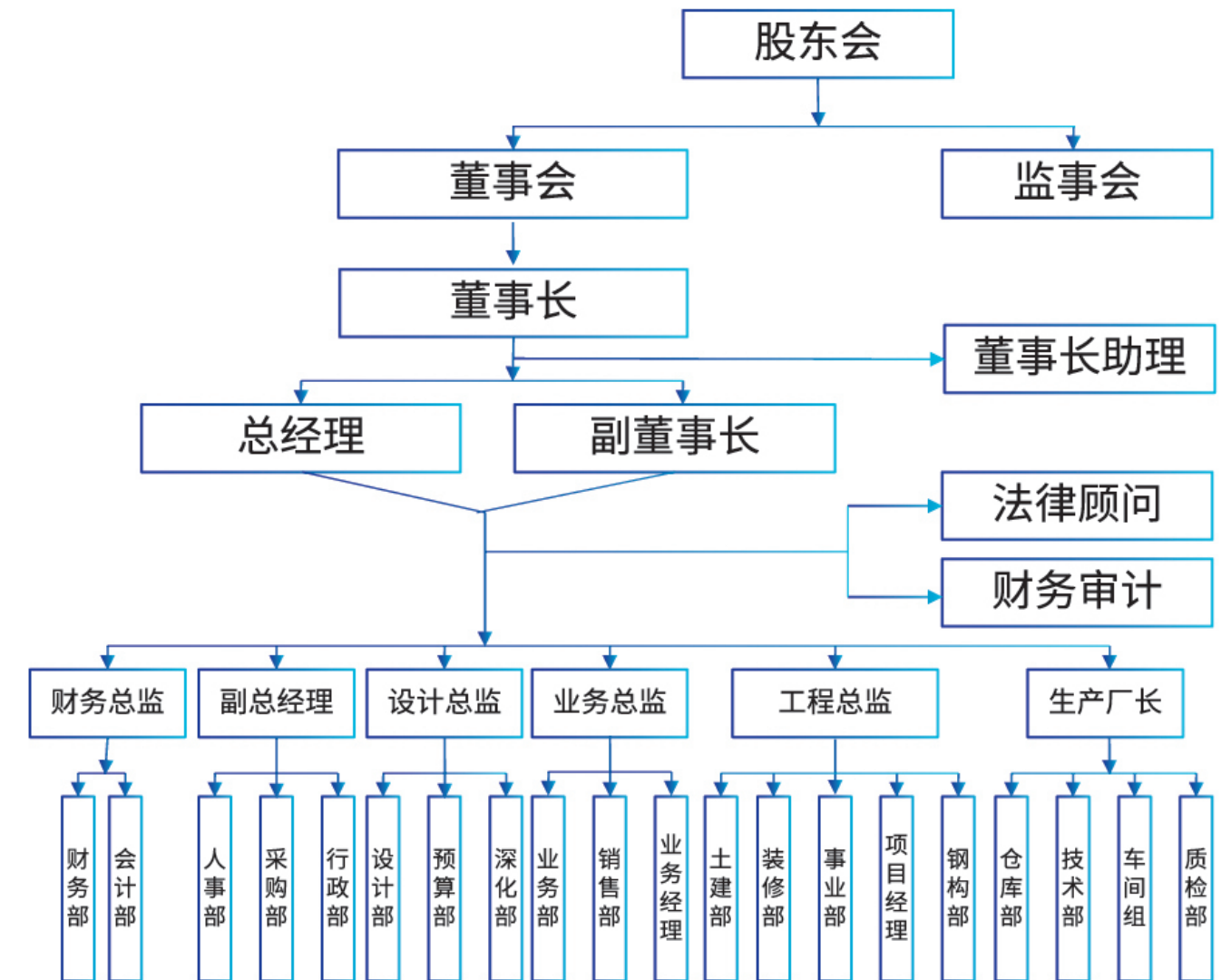
主营业务

三、承接各类建筑工程、建筑装饰工程、钢结构工程的设计和钢结构加工图深化
3. Undertake all kinds of construction engineering, architectural decoration engineering, steel structure engineering design and steel structure Tekla detailing



COMPANY ORGANIZATION CHART

组织架构



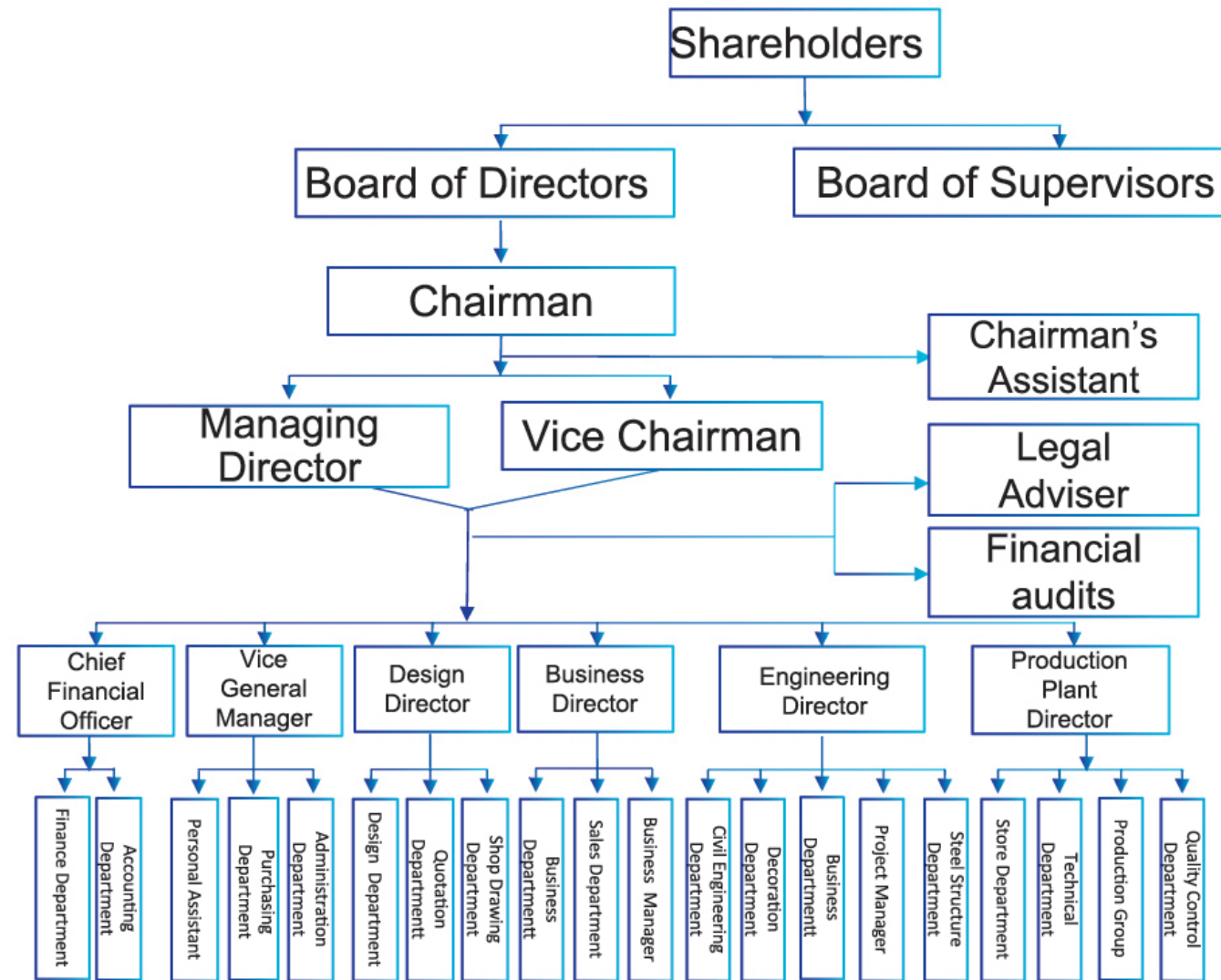
◎ 企业精神：尊重信任，合作共赢。

◎ 管理理念：只为成功找方法，不为失败找理由。

◎ 管理准则：用心服务，精细管理，开拓创新。

COMPANY ORGANIZATION CHART

组织架构



◎ Enterprise spirit : respect and trust, win-win cooperation.

◎ Management philosophy : only for success to find a way, not for failure to find a reason.

◎ Management principle : attentive service, fine management, development and innovation.

COMPANY ORGANIZATION CHART

组织架构



项目总承包团队



生产加工团队和设计技术团队

项目总承包团队：训练有素的焊工及安装工人。多支来自中缅的承包商和团队。

Project team: well trained welders and installation workers. Many contractors and teams from China and Myanmar.

生产加工团队：拥有箱型梁生产线、H型钢生产线，校平机、折边机、剪板机、相贯切割机、数控钻床、自动切割设备、自动焊接设备等多个中缅组合的班组机械操作技术精英。

Production and processing team: it has box girder production line, H-section steel production line, leveling machine, folding machine, plate shears, intersecting cutting machine, CNC drilling machine, automatic cutting equipment, automatic welding equipment and other mechanical operation technical elites of China Myanmar combination teams.

设计技术团队：团队成员均来自中国大型建筑公司、科研单位顶尖技术精英。

Design and technical team: The team members are from China's large construction companies and top technical elites of scientific research units.

MAIN FACILITY AND EQUIPMENT

主要设备

生产车间 Production Line



MAIN FACILITY AND EQUIPMENT

主要设备

主要设备清单 Major Equipment list

序号	设备名称 Equipment Name
1	CNC 数控火焰切割机 CNC flame cutting machine
2	H 型钢组立机 H-section steel assembling machine
3	全自动埋弧焊机 Full automatic submerged arc welding machine
4	H 型钢翼缘矫正机 H-shaped steel wing green straightening machine
5	二氧化碳气体保护焊机 Carbon dioxide gas shielded welding machine
6	抛丸机 Shot blasting machine
7	数控相贯线切割机 CNC intersecting line cutting machine
8	液压弯弧机 Hydraulic arc bending machine
9	连接辊式冷轧 C 型钢成型机 Connecting roll cold rolling C-beam forming machine
10	连接辊式冷轧 Z 型钢成型机 Connecting roll cold rolling Z-beam forming machine
11	连接辊式冷轧闭口式楼承板成型机 Connecting roll cold rolling closed end floor bearing plate forming machine
12	简易折弯机 Simple bending machine
13	简易分条剪板机 Simple slitting shears
14	数控钻床 CNC drilling machine
15	液压剪板机 Hydraulic shearing machine

MAIN FACILITY AND EQUIPMENT

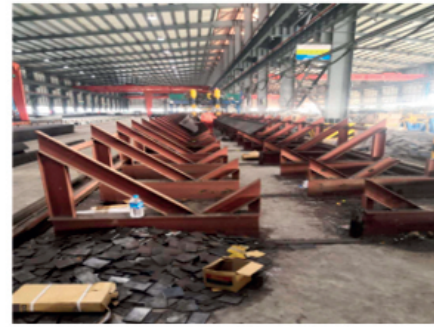
主要设备



CNC 数控火焰切割机
CNC flame cutting machine



H 型钢组立机
H-section steel assembling machine



H 型钢翼缘矫正机
Full automatic submerged arc
welding machine



二氧化碳气体保护焊机
Carbon dioxide gas shielded welding machine



数控相贯线切割机
CNC intersecting line cutting machine



抛丸机
Shot blasting machine

MAIN FACILITY AND EQUIPMENT

主要设备



液压弯弧机
Hydraulic arc bending machine



连接辊式冷轧 C 型钢成型机
Connecting roll cold rolling
C-beam forming machine



连接辊式冷轧 Z 型钢成型机
Connecting roll cold rolling
Z-beam forming machine



连接辊式冷轧闭口式楼承板成型机
Connecting roll cold rolling closed
end floor bearing plate forming
machine



简易折弯机
Simple bending machine



简易分条剪板机
Simple slitting shears



数控钻床
CNC drilling machine



液压剪板机
Hydraulic plate shears

PORTFOLIO

业绩展示



体育馆项目 Wunna Theikdi /Mandalaythiri Stadium

2013 年东南亚运动会主办场所，占地面积 56019 m²，建筑面积 32000 m²，体育场建筑平面呈椭圆形，空间呈马鞍形曲面，外围投影线长轴 263m，短轴 213m，建筑总高度 24.25m。

The host venue of the 2013 Southeast Asian Games covers an area of 56019 m², with a construction area of 32,000 m², the stadium building plan is oval, the space is saddle-shaped curved, the peripheral projection line has a long axis of 263m, a short axis of 213m, and the total height of the building is 24.25m.

PORTFOLIO

业绩展示



曼德勒商务与会议中心项目 Mandalay Convention Center

建筑面积 31000 m²，框架结构，用钢量 5200 吨。项目特点是构件厚度大，最大厚度达 125mm 厚，难点是焊接工艺要求高，焊缝等级均为一级全熔透焊，现场安装时，大吨位吊车上楼面作业。The construction area is 31,000 m², the frame structure, and the amount of steel used is 5200 tons. The project is characterized by a large thickness of components, the maximum thickness of 125mm thickness, the difficulty is that the welding process requirements are high, the weld level is a first-class full penetration welding, on-site installation, large tonnage crane floor operation and ultra-long.

PORTFOLIO

业绩展示



曼德勒饮料厂项目 Europe & Asia Commercial Co., Ltd

该项目共7栋单体(B1#~B3#,B5#~B8#),建筑面积约6万m²。本工程屋面采用钢管桁架结构,且为弧形。该工程难点:零件小,杆件多,现场焊接量大。The project has 7 single buildings (B1#~B3#,B5#~B8#). The building area is about 60000 m². The roof of the project adopts steel pipe truss structure and is arc-shaped. Difficulties of the project: small parts, many members and large amount of field welding.

PORTFOLIO

业绩展示



翔鹏程鞋厂项目 SHANG PENG CHEN CO.,LTD

本项目为鞋业加工厂,建设规划总面积约22.3万m²,分期建设。一期已完成建设占地面积约7.2万m²,其中建筑面积约4万m²;二期已完成建设占地面积约4.5万m²,其中建筑面积约2万m²;后期规划中。The project is a shoe processing plant, with a total planned construction area of about 223000 m², which will be constructed by stages. The completed construction of phase I covers an area of about 72000 m², including a building area of about 40000 m²; The completed construction of phase II covers an area of about 45000 m², including a building area of about 20000 m²; Later planning.

PORTFOLIO

业绩展示



海力达项目 Hi Li Thar

建设规划面积约为 45650 m², 其中一期完成建设占地面积约为 34000 m², 包含办公楼、车间一、车间二、仓库、独立厂房及配套宿舍楼、发电机房、配电房等综合建筑。二期已完成建筑总面积约为 9000 m²。The planned construction area is about 45650 m², of which the completed construction area of phase I is about 34000 m², including office building, workshop I, Workshop II, warehouse, independent plant and supporting dormitory building, generator room, power distribution room and other comprehensive buildings. The total building area completed in phase II is about 9000 m².

PORTFOLIO

业绩展示



理文造纸内比都恒利环保浆纸项目

Best Eternity Recycle Pulp and Paper Company Limited

本项目是中国香港上市公司“理文造纸”在缅甸内比都投资建设的项目，占地面积 25.7 万平方米。项目分两期建设，一期由湿浆生产线、洗水线、污水处理站、总变电所和场地堆场组成，建筑面积约 7 万平方米。

This project is invested and constructed by the China's Hong Kong listed company "Lee & Man Paper Manufacturing Co., Ltd" in Naypyidaw, Myanmar, has an area of 257,000 square meters. The project is divided into two phases. The first phase is composed of wet pulp production line, washing line, sewage treatment station, general substation and site storage yard, with a construction area of about 70,000 square meters.



PORTFOLIO

业绩展示



世川鞋业项目 Andonia Footwear Co.,Ltd

本项目在建中，总面积约 12 万 m^2 ，一期建筑面积约 8.5 万 m^2 ，三层楼钢框架厂房，特点用钢量大，二期建筑面积约 3.5 万平方米。The project is under construction, with a total area of about 120000 square meters. The construction area of phase I is about 85000 square meters. It is a three story steel frame plant, which features a large amount of steel. The construction area of phase II is about 35000 square meters.

PORTFOLIO

业绩展示



Top Galaxy Co.,Ltd

本项目是大型制衣厂，我司承建该项目 6# 厂房、8# 厂房、10# 厂房和锅炉房等钢结构工程，建筑面积 14368 m^2 。This project is a large garment factory, our company undertakes the project 6 # plant, 8 # plant, 10 # plant and boiler room and other steel structure projects, construction area of 14368 square meters.

PORTFOLIO

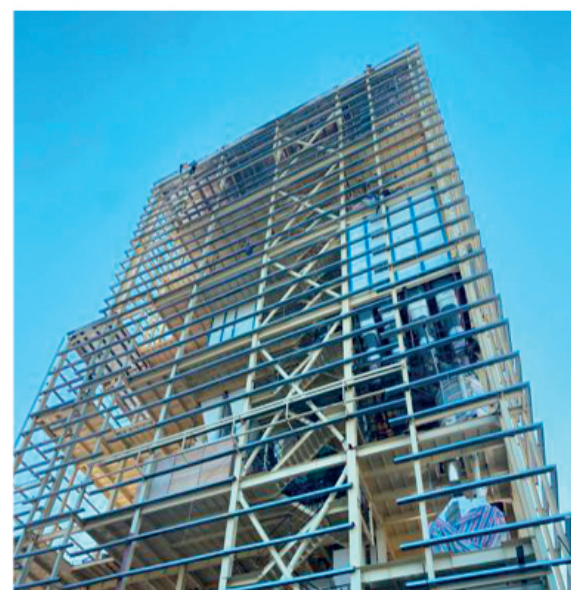
业绩展示



新希望曼德勒有限公司饲料厂项目

New Hope Mandalay Co.,Ltd

建筑面积 14365 m², 包含 6 层 40.5 米高主车间、原料仓、成品仓、综合楼、宿舍楼等。The building area is 14365 m², including 6 storey of 40.5M high main workshop, raw material warehouse, finished product warehouse, comprehensive building, dormitory building, etc



PORTFOLIO

业绩展示



聚宝城项目 JADE MARKET

一期建设规模 11661 m², 其中包含, 玉石市场, 餐厅, 办公楼, 玉石加工厂, 员工宿舍, 设备房, 六栋组合功能。二期为室内外精装修, 水电, 消防, 空调及周边市政工程等。The construction scale of phase I is 11661m2, including jade market, restaurant, office building, jade processing plant, staff dormitory, equipment room and six combined buildings. Phase II includes indoor and outdoor fine decoration, water and electricity, fire protection, air conditioning and surrounding municipal works.

PORTFOLIO

业绩展示



康瑞腊戌饲料厂

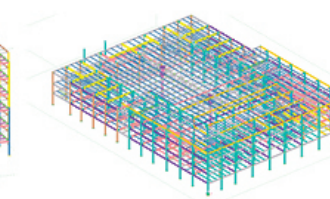
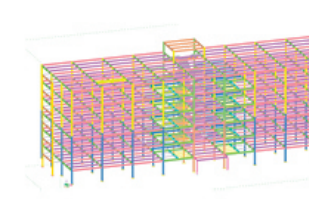
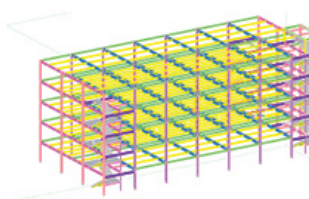
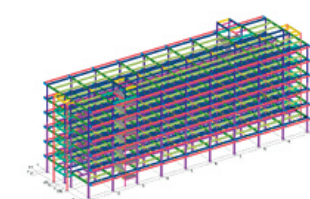
Lashio Corn Flake Feed Factory

本项目建筑面积 38467 m²，包含高 32 米成品库、压片车间、筒仓、原料仓、锅炉房、干草棚、食堂、宿舍楼等。The construction area of the project is 38467 m², including 32 meter high finished product warehouse, tablet pressing workshop, silo, raw material warehouse, boiler room, hay shed, canteen, dormitory building, etc.



PORTFOLIO

业绩展示



东美智慧新城项目

Dongmei Investment Group Co., Ltd

本项目集旅游观光、休闲度假及商务办公一体化的综合性项目，包括商业办公楼、度假别墅、星级酒店、购物中心等，总建筑面积 350,394 平方米，主体结构均采用钢结构框架，钢结构用钢量达两万多吨。This project integrates tourism, leisure and business work integration of comprehensive projects, including commercial office buildings, holiday villas, star hotels, shopping centers, etc., with a total construction area of 350,394 square meters, the main structure is made of steel structure frame, and the steel structure uses more than 20,000 tons.

PORTFOLIO

业绩展示

序 Sr.No	项目名称 Project Name	建筑规模 Building scale	项目地址（省份） Project Location
1	缅甸国家体育馆 1#2# Myanmar National Stadium 1#,2# Project	4800 万 USD	内比都 (NayPyiTaw)
2	理文造纸恒利环保浆纸项目 Liwen and Hengli Environmental Protection Pulp and Paper Project	521 万 USD	内比都 (NayPyiTaw)
3	缅甸国家体育馆 3# Myanmar National Stadium 3# roject	2500 万 USD	曼德勒省 (Mandalay)
4	曼德勒商务与会议中心 Mandalay Convention Center	900 万 USD	曼德勒省 (Mandalay)
5	曼德勒市翡翠和宝石交易市场 Mandalay Emerald and Gem Trading Market	1980 万 USD	曼德勒省 (Mandalay)
6	EAC 饮料厂 EAC Soft Drink factory Project	345 万 USD	曼德勒省 (Mandalay)
7	金龙机电商场 Jinlong Shopping Mall Project	323 万 USD	曼德勒省 (Mandalay)
8	MaMa 方便面厂 MA MA Instant noodle factory Project	259 万 USD	曼德勒省 (Mandalay)
9	IVECO 汽车 4S 店工程 IVECO Automobile 4S Shop Project	92 万 USD	曼德勒省 (Mandalay)
10	瓦城摩托车厂一期 Aung Kenbo Motorcycle factory phase I Project	30 万 USD	曼德勒省 (Mandalay)
11	瓦城摩托车厂二期 M_ AKB Aung Kenbo Motorcycle factory phase II Project	208 万 USD	曼德勒省 (Mandalay)
12	Royal.D 饮料厂 Royal D Soft Drink Factory Project	125 万 USD	曼德勒省 (Mandalay)
13	宏佳建材城钢构工程 Hongjia building materials City steel structure project	415 万 USD	曼德勒省 (Mandalay)
14	金龙机电商场仓库项目 Jinlong Electromechanical Mall Warehouse project	37 万 USD	曼德勒省 (Mandalay)
15	张家会馆 Function Hall Project	42.8 万 USD	曼德勒省 (Mandalay)
16	新希望曼德勒饲料厂土建钢构工程 New Hope Mandalay Feed Plant Project	435 万 USD	曼德勒省 (Mandalay)
17	玉石市场 Jade Market Project	179 万 USD	曼德勒省 (Mandalay)
18	曼德勒希尔顿停车场 Steel Structure Works of Hilton Mandalay Car Parking Project	39 万 USD	曼德勒省 (Mandalay)
19	日本烟草公司 JTI Japan Tobacco Corporation Project	39 万 USD	仰光省 (Yangon)
20	明格拉东仓库 Mg Mg Warehouse Project	39.5 万 USD	仰光省 (Yangon)

PORTFOLIO

业绩展示

序 Sr.No	项目名称 Project Name	建筑规模 Building scale	项目地址（省份） Project Location
21	YJ4 仓库项目 MM Interplast Warehouse (I) Project	102.6 万 USD	仰光省 (Yangon)
22	迪洛瓦蓄水池污水池工程 Thilawa Reservoir Sewage Pool Project	15.7 万 USD	仰光省 (Yangon)
23	三星展示厅项目 Samsung Showroom project	6.8 万 USD	仰光省 (Yangon)
24	香港成衣厂项目 Hong Kong Garment Factory Project	17 万 USD	仰光省 (Yangon)
25	石膏板厂工程 Gypsum Board Plant Project	7.7 万 USD	仰光省 (Yangon)
26	迪洛瓦新建车间 Thilawa New Workshop Project	20.6 万 USD	仰光省 (Yangon)
27	蓝黛雅车间 Workshop Project	15 万 USD	仰光省 (Yangon)
28	明格拉东牙膏厂 Toothpaste Factory Project	27 万 USD	仰光省 (Yangon)
29	PCL 仓库 PCL Warehouse Phase (II)Project	15 万 USD	仰光省 (Yangon)
30	海力达 Hi Li Thar 项目 Hi Li Thar Project	694 万 USD	仰光省 (Yangon)
31	染坊项目 Myanmar Panda Manufacturing Company' s Warehouse Project	37 万 USD	仰光省 (Yangon)
32	染坊新宿舍项目 New dormitory project	148 万 USD	仰光省 (Yangon)
33	本田 HonDa Project	327 万 USD	仰光省 (Yangon)
34	毛淡棉仓库 Mottama Warehouse Project	10.5 万 USD	仰光省 (Yangon)
35	亚盛鞋厂 Yasheng shoe factory Project	5.8 万 USD	仰光省 (Yangon)
36	明格拉东展厅 MEC Showroom Project	20 万 USD	仰光省 (Yangon)
37	华佳包装纸业 Hua Jia Project	189 万 USD	仰光省 (Yangon)
38	新保利项目 Xin Bao Li Project	387 万 USD	仰光省 (Yangon)
39	宝成坡道工程 Pou Chen Ramp project	17 万 USD	仰光省 (Yangon)
40	宏全钢构厂房 Hon Chuan Warehouse Project	281 万 USD	仰光省 (Yangon)

PORTFOLIO

业绩展示

序 Sr.No	项目名称 Project Name	建筑规模 Building scale	项目地址 (省份) Project Location
41	顺康 S1S2 厂房项目钢结构工程 Grand Enterprise Garment Steel structure Works of S1S2 Workshop project	235 万 USD	仰光省 (Yangon)
42	嘉富君天展示中心项目 Exhibition Center Project	60 万 USD	仰光省 (Yangon)
43	火锅城项目 Hotpot City Project	25 万 USD	仰光省 (Yangon)
44	佛教大学项目钢结构工程 Steel Structure Works of Pannabhumi Buddhist University Project	25.7 万 USD	仰光省 (Yangon)
45	宇视光学国际项目钢结构工程 Steel Structure Works of Yushi Optics International Project	155 万 USD	仰光省 (Yangon)
46	迪洛瓦罐区项目钢结构工程 Steel structure Works of Tank Farm & Distribution System project	256 万 USD	仰光省 (Yangon)
47	翔鹏程一期新建工程 SPC Sheng Peng Chen phase I new project	978 万 USD	勃固省 (Bago)
48	翔鹏程二期新建工程 Sheng Peng Chen phase II new project	661 万 USD	勃固省 (Bago)
49	世川鞋业一期新建厂房工程 Adonia Footwear phase I Project	1870 万 USD	勃固省 (Bago)
50	东兴富工业园一期新建厂房 Dongxingfu Industrial Park Phase I Project	104.6 万 USD	勃固省 (Bago)
51	顶级银河厂房钢构 Steel structure Works of Top Galaxy Project	111.5 万 USD	勃固省 (Bago)
52	博生针织厂 Myanmar Knitting Factory Project	361 万 USD	勃生 (Pathein)
53	博生针织厂围墙项目 Myanmar Knitting Factory Fencing Work	146 万 USD	勃生 (Pathein)
54	CTC 茶厂项目钢结构工程 Steel structure works of Tea factory project	27 万 USD	掸邦 (shan)
55	东美智慧新城项目钢结构工程 Steel Structure Engineering of Dongmei Smart New City Project	3000 万 USD	克伦邦 (Kayin State)
56	KRL 康瑞腊戎饲料厂 Lashio Corn Flake feed Factory Project	112.7 万 USD	掸邦 (shan)
57	MMI 新仓库项目 MM Interplast New Wrehouse (II) Project	55 万 USD	仰光省 (Yangon)
58	翡翠电子商务中心 Emerald E-Commerce Center Project (EEC)	20.7 万 USD	内比都 (NayPyiTaw)

尊重信任 合作共赢

Respect, trust and win-win cooperation

用心服务 精细管理 开拓创新

Attentive service, fine management, development and innovation

只为成功找方法 不为失败找理由

Only find methods for success, not reasons for failure

缅甸亿金开发建设有限公司

Myanmar Yijin Development and Construction Co., Ltd

缅甸亿金钢结构有限公司

Myanmar Yijin Steel Structure Co., Ltd

缅甸亿金设计研究院有限公司

Myanmar Yijin Design Institute Co., Ltd